

Jh Mouse

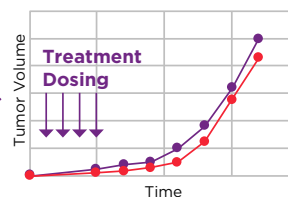
Antibody-deficient C57BL/6 and BALB/c mice for immunology and immuno-oncology research

THE JH MOUSE PERMITS CLINICALLY-RELEVANT DOSING OF IMMUNOGENIC TEST ARTICLES IN SYNGENEIC TUMOR MODEL SYSTEMS

Standard Inbred Strain



BALB/c mouse
implanted with syngeneic tumor cell line derived from BALB/c or
C57BL/6 mouse
implanted with syngeneic tumor cell line derived from C57BL/6

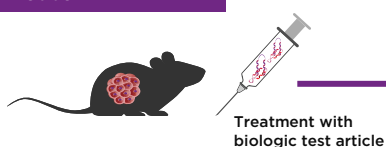


Standard inbred host develops humoral immune response (anti-drug antibodies) against test article, which can neutralize the therapy or even cause anaphylaxis



CANNOT
determine efficacy of test article due to host immunogenic response

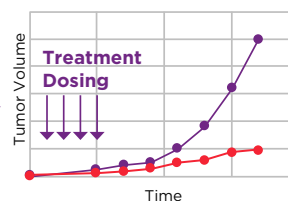
Jh Mouse



Jh Mouse implanted with syngeneic tumor cell line derived from BALB/c or C57BL/6

Taconic offers two Jh Mouse models:

- ▶ Jh Mouse on BALB/c background (model #1147)
- ▶ Jh Mouse on C57BL/6 background (model #17758)



The Jh Mouse lacks B cells, so no anti-drug antibodies are produced. It retains other immune cell types such as T cells, so immunotherapies can be successfully evaluated using clinically-relevant dosing.



CAN
determine efficacy of test article

Immunogenicity can pose a major challenge in preclinical efficacy studies. Biologic drugs, including humanized antibody derivatives, can induce an immune response in immunocompetent mice. This immune response can range from neutralizing anti-drug antibodies (ADA) to anaphylaxis, and immunogenicity can prevent successful evaluation of efficacy in preclinical studies. Use of a B cell-deficient model such as the Jh Mouse enables assessment of clinically-relevant dosing of immunogenic therapeutics.

Get in touch for more information about our products and services.

US: 1-888-822-6642 | EU: +45 70 23 04 05 | info@taconic.com | Learn more at: taconic.com/jh

THE COMPLETE SOLUTION

MODELS TO DRIVE DRUG DISCOVERY

Taconic Biosciences is uniquely positioned to enable drug discovery through animal models by being the only company that partners with customers to provide expertise, quality, and availability, along with downstream services:

- ▶ Expertise at every step
- ▶ Highest quality standards in the industry
- ▶ Availability and access to drive global research

MODEL GENERATION SOLUTIONS

Taconic's Model Generation Solutions empower our customers with a unique combination of capabilities, specifically tailored to each individual discovery program:

- ▶ Most experienced model generation and breeding company
- ▶ Most comprehensive toolkit
- ▶ Exclusive programs
- ▶ Concierge approach to partnering with customers

COLONY MANAGEMENT SOLUTIONS

Taconic's fully-integrated colony management solutions bring innovative models from design to study-ready cohorts with unprecedented speed and transparency:

- ▶ Most experienced model generation and colony management company
- ▶ The complete toolkit
- ▶ Colony management solution process
- ▶ Partnering with our customers
- ▶ Expanded applications and opportunities

YOUR PARTNER

WHAT WE DO

Taconic Biosciences is a fully-licensed, global leader in genetically engineered rodent models and services. Founded in 1952, Taconic provides the best animal solutions so that customers can acquire, custom-generate, breed, precondition, test, and distribute valuable research models worldwide.

WHO WE ARE

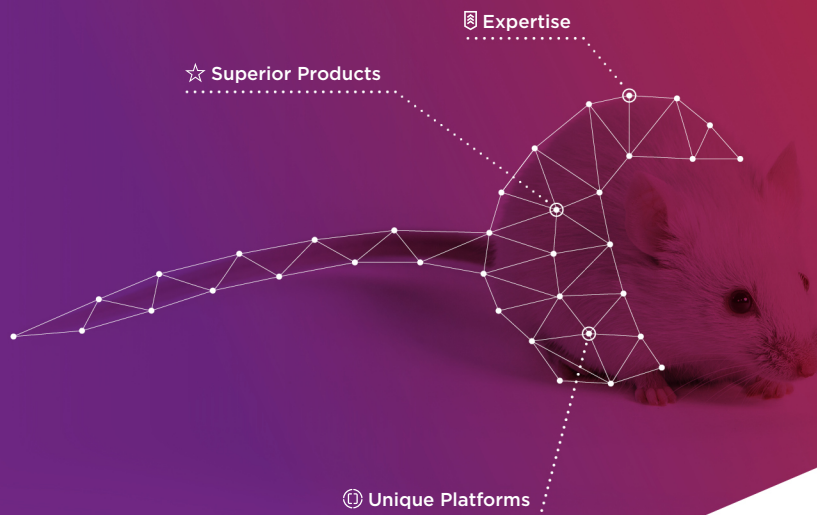
Taconic has created a unique ecosystem of experts to provide our customers with the best animal model solutions. Whether it is choosing the right model for your study, designing a custom model, creating an efficient breeding plan, or providing expertise in critical support functions like veterinary science, genetics, and embryology; Taconic is ready to help you drive your research from idea to cure.

CONTACT US

To get started, contact one of our customer service team members. Contact us at info@taconic.com.

VISIT TACONIC.COM

There is so much more to learn. Visit taconic.com to see our full breadth of animal model solutions and valuable resources.



Antibody-deficient C57BL/6 and BALB/c mice for immunology and immuno-oncology research

- ▶ B cell-deficient mice do not produce antibodies and are useful for (1) mechanistic studies of the role of humoral immunity and (2) preventing humoral-mediated immunogenicity of test articles in various mouse models
- ▶ Appropriate for use in syngeneic tumor studies using immunogenic test articles
- ▶ Carries a deletion of the endogenous murine J segments of the Ig heavy chain locus
- ▶ In homozygotes, all four JH gene segments are absent, resulting in cells that cannot produce a complete, recombined version of the variable region of the heavy chain
- ▶ Contains no mature B cells and does not produce antibodies
- ▶ The Jh Mouse may be crossbred to other GEM strains such as genetically humanized PD-1 mice to further extend its utility in syngeneic tumor studies. Inquire for details on crossbreeding rights

ORDERING INFORMATION

Model Name	Model #	Nomenclature
Jh (C57BL/6)	17758	C57BL/6NTac-Igh-J ^{em1Tac}
Jh (BALB/c)	1147	C.Cg-Igh-J ^{tm1Dhu}